

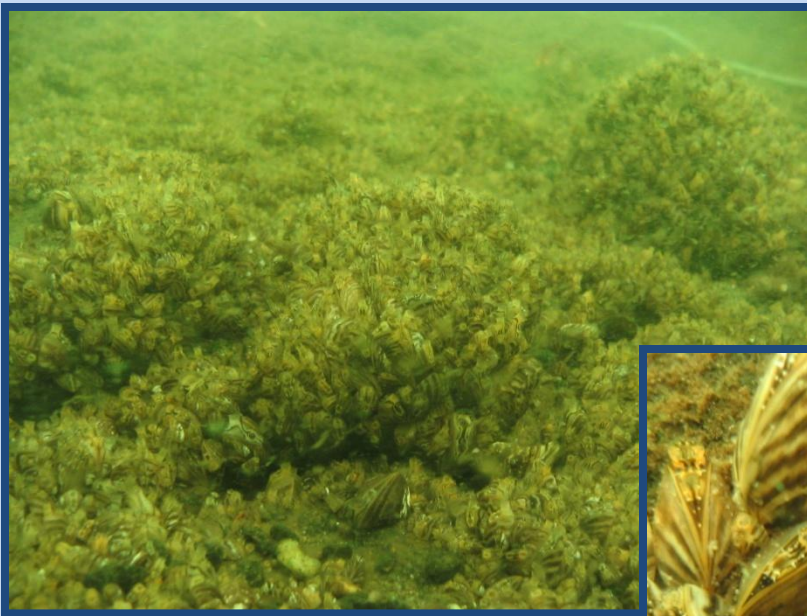
Zebra Mussels On Our Doorstep!!

*These pictures were taken in Mille Lacs
Lake by the DNR last summer.*

*The growth in just a few years has been
incredible.*

Prevention is our ONLY hope.

**WITHOUT YOUR HELP IT CAN
HAPPEN HERE!**

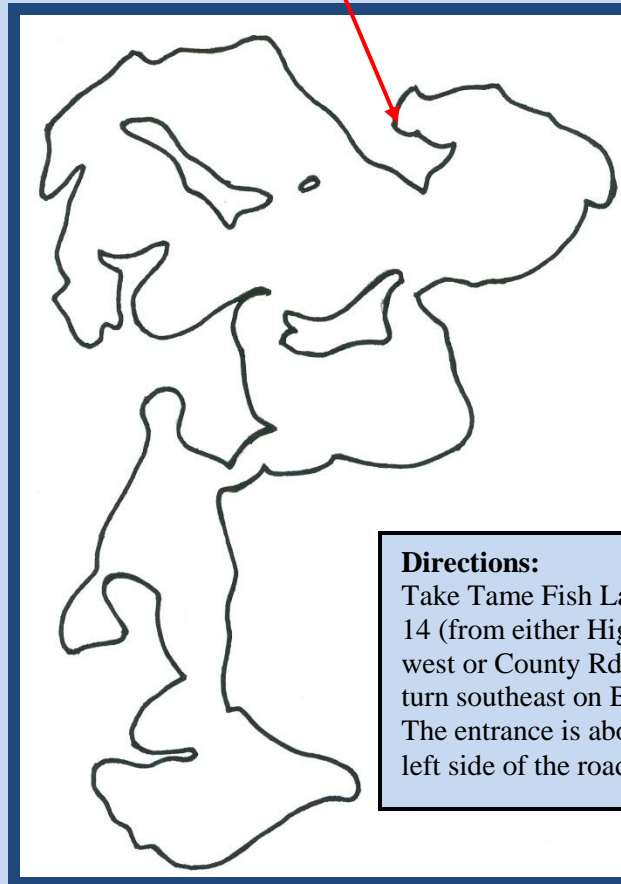


Being passive won't cut it.

PLEASE:

- **Volunteer** to monitor our Public Access.
- **Contribute** to the BLIA Environmental Fund
- **Insure** all visitors use **ONLY** the Public Access.

Bay Lake Public Access



Directions:

Take Tame Fish Lake Road/County 14 (from either Highway 6 on the west or County Rd 10 on the east) and turn southeast on Battle Point Road. The entrance is about 1/3 mile on the left side of the road.

To Volunteer: Contact Phil Rollins at philfishing@gmail.com.

To Contribute on-line, [click here](#). Or view the intro in What's New on the BayLake.org home page.

To Contribute by snail mail, send your donation to: BLIA, PO Box 461, Deerwood, MN 56444.

