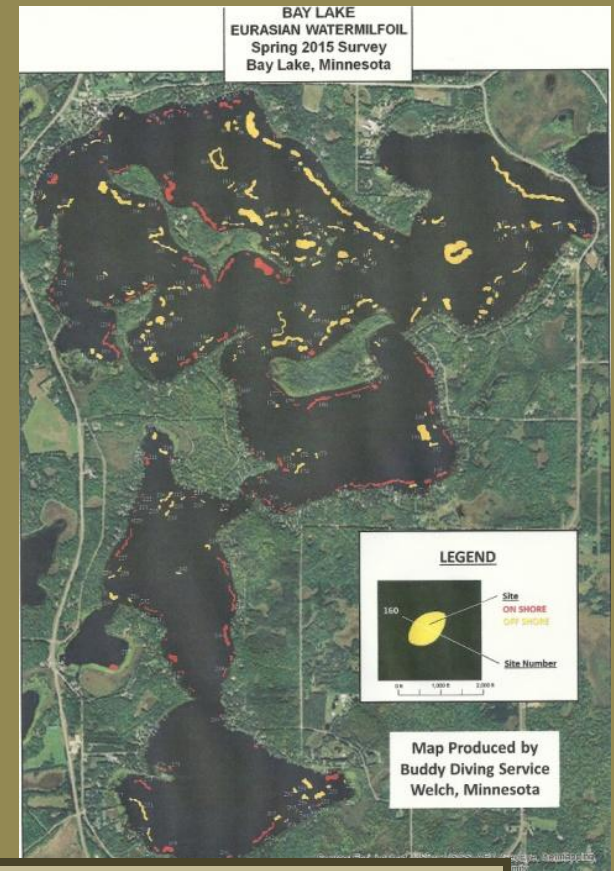
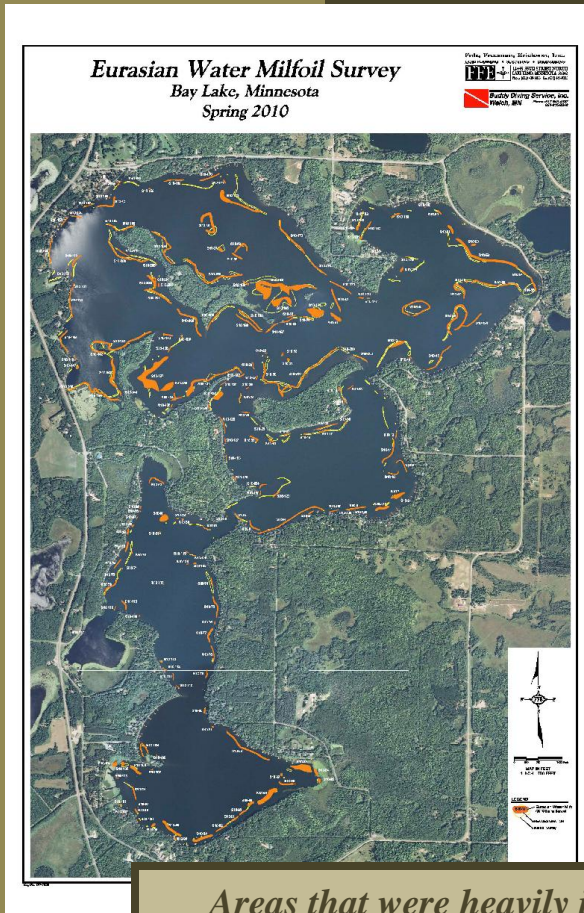


# *EWM Infestation Comparison*

## *2010, 2014 & 2015*



*Areas that were heavily infested in 2010, were in good shape in 2014. This was primarily due to consistent treatment.*

*We can do this again **IF** we expand treatment acreage & increase Environmental Fund donations.*

*It's definitely NOT time to "Give Up".....It's the time to "Give More"*

***Send a clear message to BLIA with your contribution to the Environmental Fund.***